

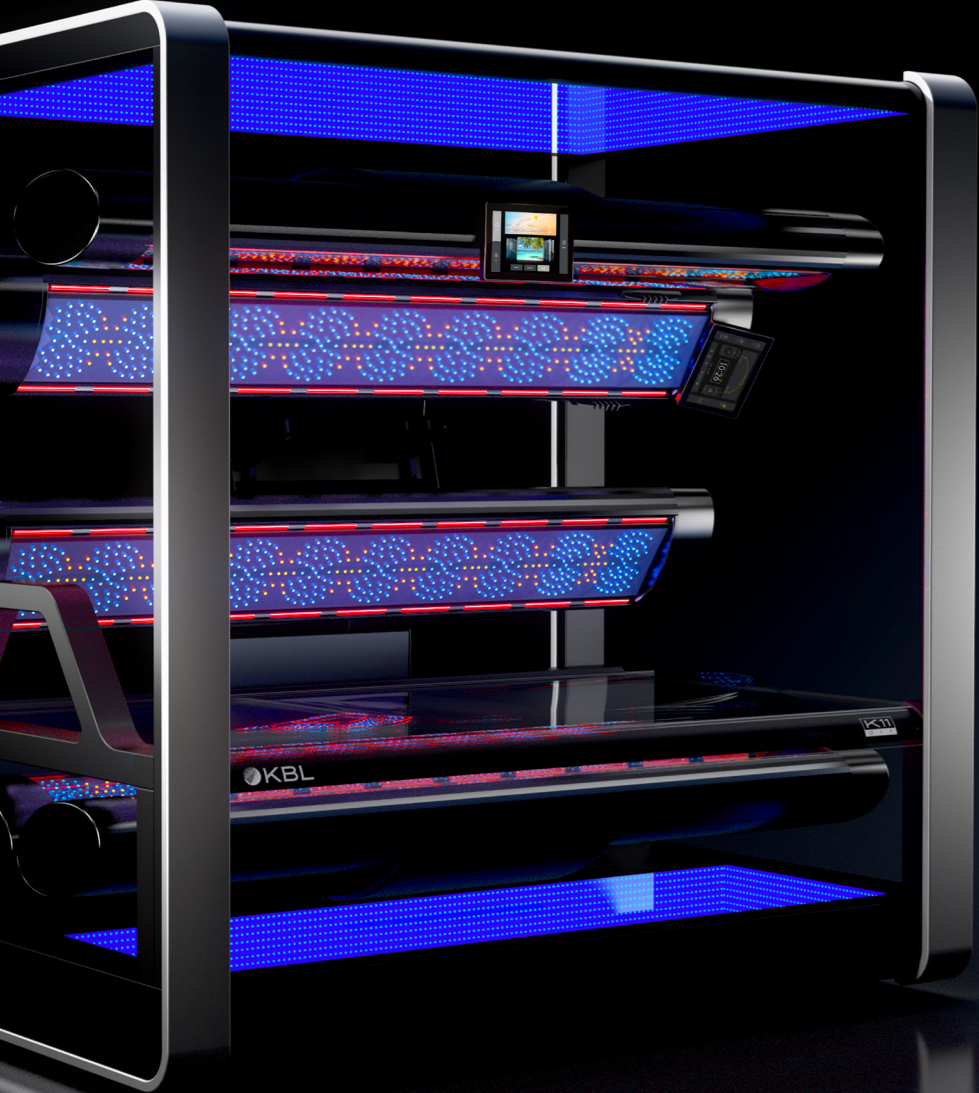
REDEFINING SUNSHINE



K11  
a i r

L O F T





Sensitive Medium Intensive

### EXPRESS YOUR INDIVIDUALITY!

For the first time, a solarium is using LEDs for the spectra of UVA, UVB, and red light. This opens up completely new possibilities to make your tanning experience even more individual. Choose your dream destination, shift the sun to the desired time of day, and enjoy your short getaway.



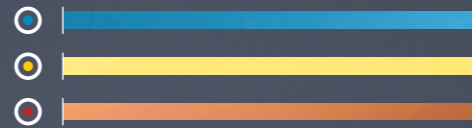
### SUNRISE

Medium EXPERIENCE THE SUNRISE ON CAPRI, ...



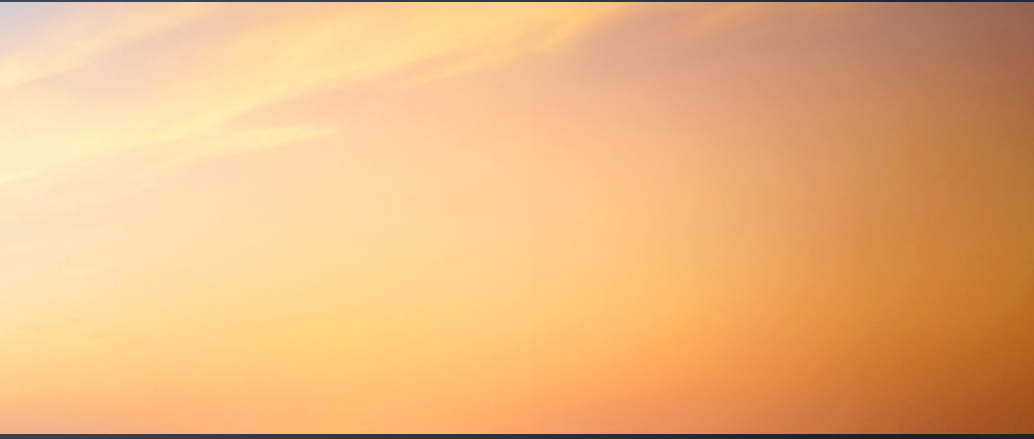
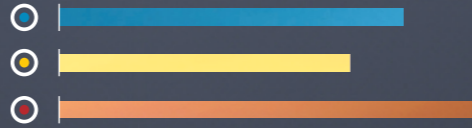
### PEAK SUNSHINE

Intensive ... ENJOY PEAK SUNSHINE FROM HAWAII, ...



### SUNSET

Sensitive ... OR FEEL THE SUNSET IN THE HAMPTONS.




**UV-CONFIGURATION**

SunFinity LED-Technology:

2010 x  UVA LEDs

552 x  UVB LEDs

>4800 x  Nano Beauty LEDs

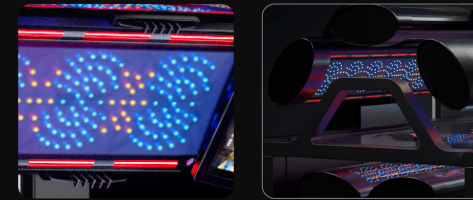
**MAXIMUM POWER CONSUMPTION**

**starting at 6.5 kW** (without AC)  
up to 7.3 kW

**DIMENSIONS**

LENGTH x WIDTH x HEIGHT  
**90.6" x 59.5" x 87.8"**

**AIRBREEZE PRO  
FACE & BODY**



**AIR  
CONDITION**



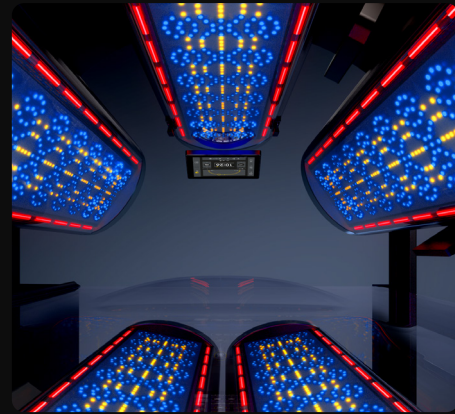
**SUN  
CONTROL**



**10" SMARTCONTROL  
VIDEO PLAYER**



**SUNFINITY   
FACE & BODY**



**VOICE  
ASSIST**



**AQUA  
COOL**



**3D SOUND-  
SYSTEM**



**WEB  
RADIO**



Frozen Silver

Wonder White

Black

White

**BLUETOOTH**



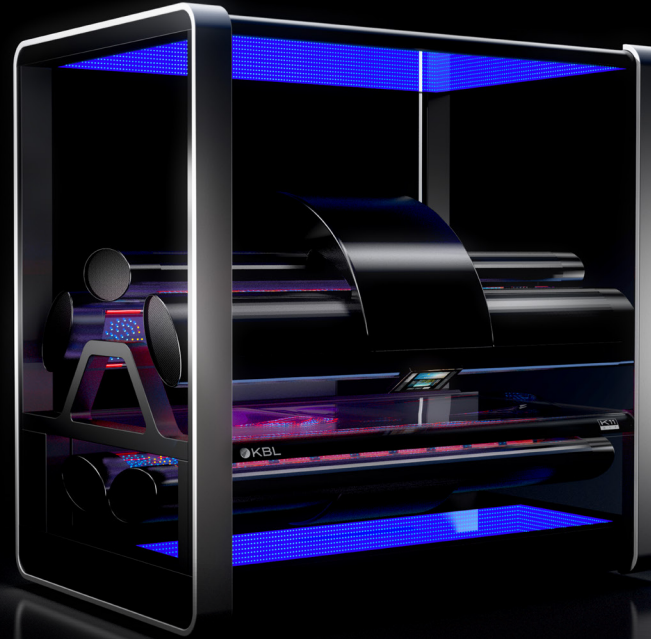
**QUIET  
TANNING**



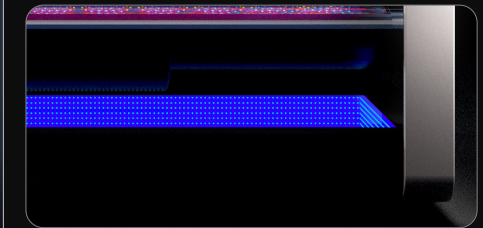
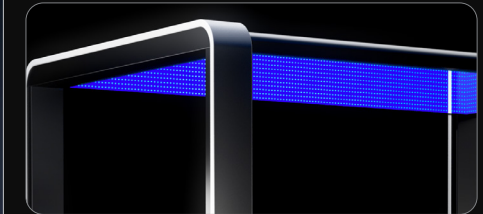
**WIRELESS  
CHARGER**



**KBL 8  
SOFTRONIC**



**INFINITY  
MIRROR**



Preliminary Data Sheet · Errors and omissions possible. KBL reserves the right to change technical data or specifications without notice · [www.kbl-usa.com](http://www.kbl-usa.com)

Contraindication: This product is contraindicated for use on persons under the age of 18 years. "Contraindication: This product must not be used if skin lesions or open wounds are present." "Warning: This product should not be used on individuals who have had skin cancer or have a family history of skin cancer." "Warning: Persons repeatedly exposed to UV radiation should be regularly evaluated for skin cancer."