

°CRYO SCIENCE
THE °CRYO PENGUIN SERIES



°CRYO Science

°CRYO Science is the leading innovator and manufacturer of all cryogenic applications and the inventor of the °CRYO Arctic chambers and °CRYO Penguin machines, two of the safest machines in the industry.

We adapt, execute, and progress. We pride ourselves in being forward thinkers and our state of the art cryotherapy equipment is the reason for our continuous growth. Our manufacturing facility is set up to the highest EU standards based out of Wroclaw, Poland.



We handle worldwide enquiries and installations tailored to meet your needs.



What is Cryotherapy?

Cryotherapy is the science of exposing the body to sub-zero temperatures in order to stimulate physical and mental health benefits. It reduces inflammation in the body by boosting an anti-inflammatory chemical called norepinephrine.

Cryotherapy also boosts blood circulation throughout the body which results in a higher metabolic and caloric burn rate. The treatment also increases the level of endorphins which can elevate mood and reduce stress.

In terms of beauty benefits, cryotherapy increases collagen production, which in turn tightens the skin, and brings forth a youthful glow.



What is Localised Cryotherapy?

Localised cryotherapy is the application of cryogenically cooled air to specific parts of the body.

Localised cryotherapy can be used for two main categories:

Beauty Treatments

Beauty treatments such as °CRYO Facials or cellulite reduction use localised cryotherapy technology. The facials increase the collagen production in the skin and leaves the skin visibly smoother with a restored youthful glow.



Pain Management & Injury Recovery

Localised cryotherapy can also be used to alleviate pain, inflammation and speed up recovery from injuries through cryogenically cooled air penetrating deeper into the layers of tissue and increasing blood circulation.



°CRYO PENGUIN Series

The °CRYO Penguin series is designed to deliver the easiest, safest and most effective localised cryotherapy treatments in the industry. With its ergonomic design, pre-programmed treatment protocols, and built-in safety features, the °CRYO Penguin series offers the highest standards in cryotherapy treatments.

The °CRYO Penguin series can also be used to complement and upgrade your existing menu to include cryotherapy treatments.

The °CRYO Penguin series consists of two models: °CRYO Penguin, and °CRYO Penguin LITE.

The main differences between the two models is that:

- (1) The °CRYO Penguin uses a larger nitrogen vessel than the °CRYO Penguin LITE (50L vs. 30L). This enables the user to deliver more localised cryotherapy sessions before having to re-fill the vessel
- (2) The °CRYO Penguin has a sleeker design and is easier to use thanks to an ergonomic support arm, that balances the nozzle and makes it easier and more precise to deliver the treatments, and a larger screen size (10" vs. 7")



°CRYO PENGUIN Series - Features

Auto-balancer to maximize ease-of-use (Only in °CRYO Penguin)

7" - 10" Digital touchscreen with user-friendly interface

30 to 50 liter mobile nitrogen vessel that can be refilled at any time

Protocols for °CRYO Facials, Localised °CRYO, and Cellulite Reduction treatments

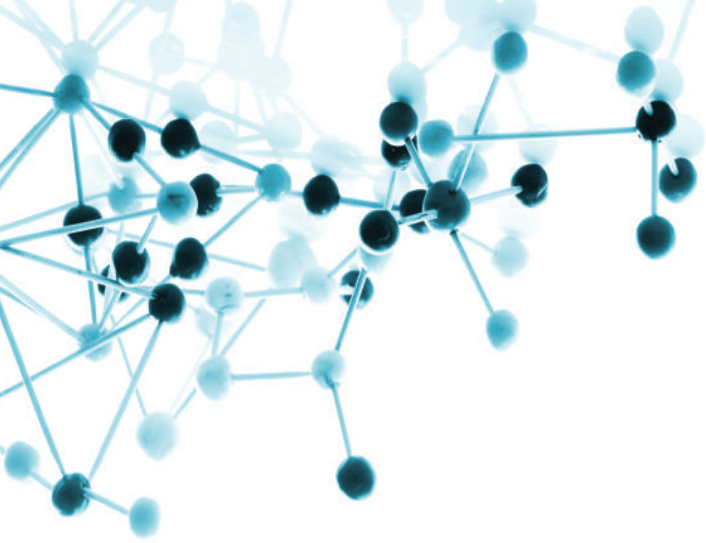
LED lights and precision lasers to indicate optimal distance, pinpoint treatment area, and alert user when critical skin temperature is reached

Ergonomic handle with remote control feature



°CRYO PENGUIN Series - Features Comparison

	Features	°CRYO Penguin	°CRYO Penguin LITE
Treatment Types	°CRYO Facials	✓	✓
	Localised °CRYO	✓	✓
	Cellulite Reduction	✓	✓
Treatments	Beauty & Anti Aging	9 programs	9 programs
	Sports & Injury Recovery	15 programs	15 programs
	°CRYO Pro Mode	✓	✓
	Reporting	✓	✗ (can be upgraded)
Safety Features	LED lights - Indicate optimal distance to conduct treatment	✓	✓
	LED lights - Pinpoint treatment area	✓	✓
	LED color change to alert user of critical skin temperature	✓	✓
	Liquid Nitrogen – Light and sound alert when filling the nitrogen vessel	✓	✓
Refilling System	Mobile vessel to increase ease of use	✓	✓
	Can be refilled immediately at any time – No requirement for disassembly evaporator	✓	✓
Features	Ergonomic handle	✓	✓
	Touchscreen with user-friendly interface	10"	7"
	Handle support arm with auto-balancer	✓	✗
	Remote control feature on the handle to maximize ease of use.	✓	✗ (can be upgraded)
Nitrogen Vessel	Mobile Nitrogen Vessel	50 L	30 L (Upgradable to 50 L)



www.cryosc.com

Get in touch with us

contact@cryosc.com

www.cryosc.com

