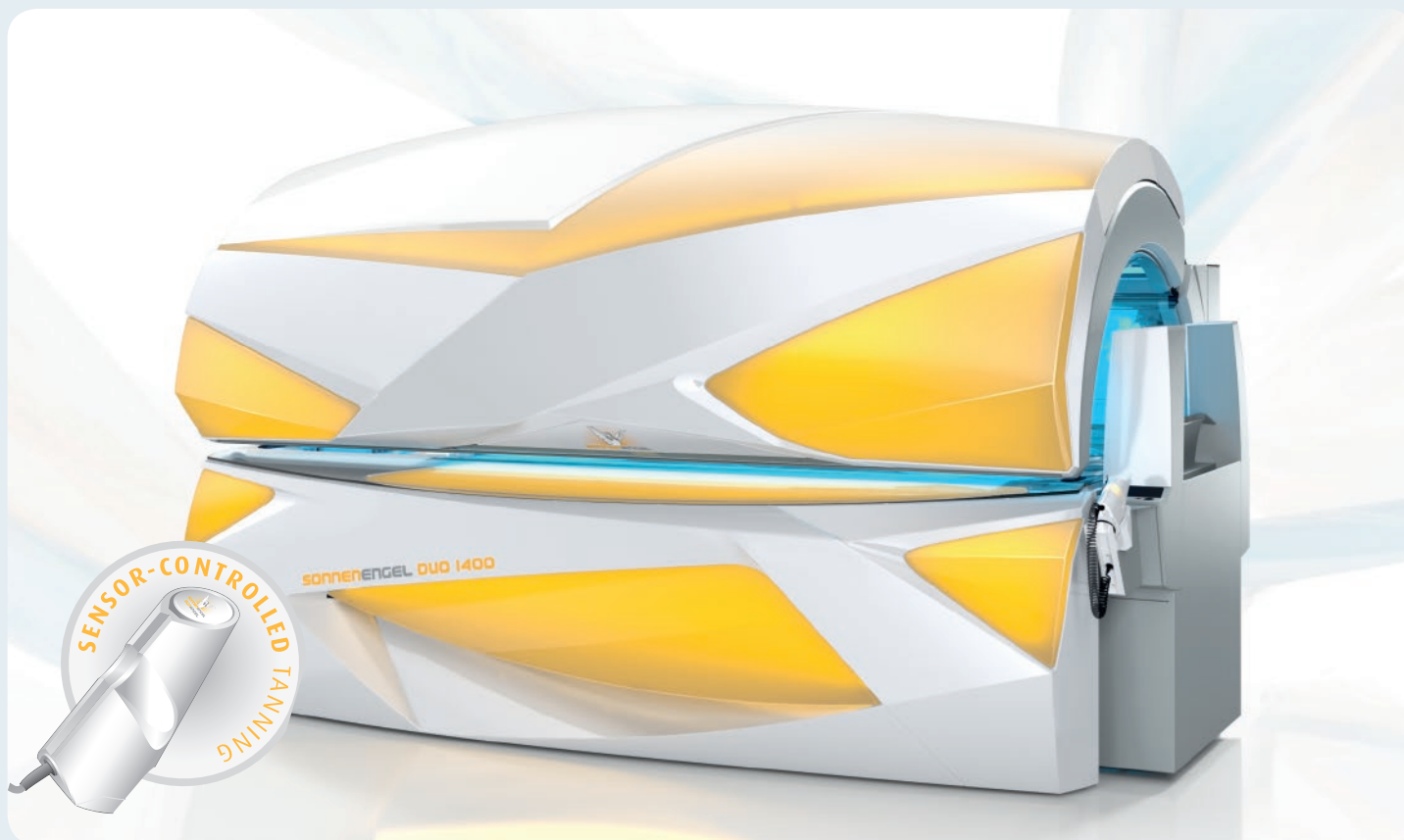
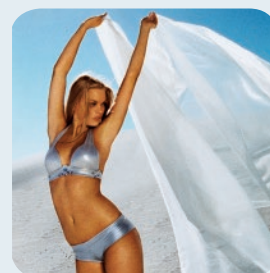


**SONNENENGEL  
DUO 1400**

**INDIVIDUAL  
PERFORMANCE**

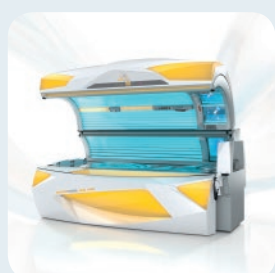


**SUNANGEL DUO 1400**

## HEAVENLY SENSATIONS

The SUNANGEL 1400 truly is one of a kind. No other tanning bed delivers results, luxury, and peace of mind like the SUNANGEL does. The high-end technology on the inside is only matched by the stunning design and animated illumination on the outside. Invite your tanners to a positively special tanning experience! Watch the sun rise in your salon with the addition of the SUNANGEL. The LED Light Show creates beautiful light animations in sunny colors, highlighting the dramatic lines of the bed.

- **INDIVIDUAL UV SPECTRUM**
- **SENSOR-CONTROLLED TANNING**
- **DUO SELECT FEATURE**
- **TAN WITH CONFIDENCE**





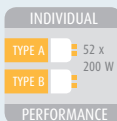
SENSOR

The intelligent skin sensor takes seconds to measure the skin's current UV light sensitivity, virtually eliminating the risk of sunburn.



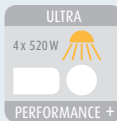
DUO SELECT

Two selectable programs, offer a choice between Essential Sunshine conducive to Vitamin D3 synthesis\* and Styling Sunshine for a perfectly customized tan!



PERFORMANCE

Individual Performance allows a perfectly customized tan by personalizing the mix of UVA and UVB for each tanner. For a glowing tan and lower risk of overexposure.



PERFORMANCE +

Ultra Performance Plus technology with glass reflectors includes UV-B spaghetti lamps and special filters. It is the most advanced facial system on the market today.



SHOULDER TAN

High-pressure shoulder tanners give you additional tanning performance to the top of the shoulders with innovative Ultra Performance technology.



LED LIGHT SHOW

High quality performance LED's guarantee impressive color brilliance with more than 200 colors and light effects. It features energy savings and a life of more than 30.000 hours.



INTERIOR LIGHT

The new LED interior light emphasizes the features in the tanning tunnel. The brightly illuminated tanning tunnel appears particularly hygienic and invites your customers to tan.



MULTI RELAX

Our ergonomically designed base acrylic with an integrated head cushion, comfortable arm rests and footrests will give you comfort second to none during your tanning session.



TEMPTRONIC

Temptronic allows you to define your preferred temperature and keeps it consistent throughout the entire tanning session.



AQUA MIST

Aqua Mist ensures a pleasant refreshment during the tanning session by diffusing a superfine mist into the face and/or body area of the tanning tunnel.



AROMA

The aroma function circulates gently scented air in the tanning tunnel and room. Enjoy the tanning session with all your senses for a perfectly relaxing experience.



NFC CONNECT

With NFC Connect various comfort settings can be saved on a customer card – all individual preferences are already set for the next visit. It's simple!



CONTROL CENTER

With the Control Center all comfort settings can be adjusted even before the tanning session within seconds. The large exterior display panel makes operation more convenient than ever before.



3D SOUND

Our 3D Sound System will bathe you in a sumptuous sea of sound as you tan. The system consists of two speakers, a subwoofer, and an SD card slot and MP3 connection.



MP3 AUX

With this function you can connect a MP3 player or a smartphone to enjoy your own music during the session. The Auto Play function will recognize the connection automatically.



VOICE GUIDE

Voice Guide walks you through every step in a pleasant, friendly voice as you control the tanning bed.



## SONNENENGEL DUO 1400

### INDIVIDUAL PERFORMANCE

Lamps	Watts max.	FT	Watts max.
52	200	4	520
UV-B-Lamps	Watts	ST	Watts
3	8	2	240

Maximum exposure schedule: 12 minutes

**Features:** Sensor, Duo Select, Individual Performance, Ultra Performance PLUS, Shoulder Tan, LED Light Show, Interior Light, Multi Relax, Comfort Cooling, Temptronic, Aqua Mist, Aroma, NFC Connect, Control Center, 3D-Sound-Unit\*, Professional Set-up Manager

\*3D-Sound-Unit incl. Voice Guide, MP3- & iPod-connection, SD-Card-Slot, Automatic-Volume und Auto Play.

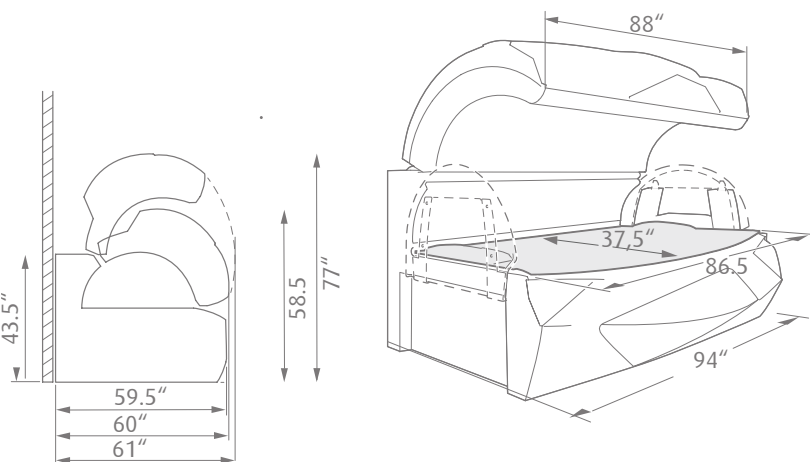
## TECHNICAL SPECS, DIMENSIONS AND DATA

### DIMENSIONS AND SPECS

- Optional exhaust plenum
- Dimensions closed (LxWxH in inches): 94 x 61 x 59
- Dimensions open (H in inches): 77
- Recommended room size (in feet): 10 x 9
- Weight: 1,500 lbs

### INDIVIDUAL PERFORMANCE

- Total power consumption (in watts): 17,600
- Electrical requirements: 230V 3Ø or 230V 1Ø
- Circuit breaker recommended:
- 70A / 3-pole 3Ø or 110A / 2-pole 1Ø
- Number of wires required: 4 3Ø or 3 1Ø



\* Notice: You do not need to become tan for your skin to make Vitamin D3. Exposure to ultraviolet radiation may increase the likelihood of developing skin cancer and can cause serious eye injury.

Contraindication: This product is contra indicated for use on persons under the age of 18 years.

Contraindication: This product must not be used if skin lesions or open wounds are present.

Warning: This product should not be used on individuals who have had skin cancer or have a family history of skin cancer.

Warning: Persons repeatedly exposed to UV radiation should be regularly evaluated for skin cancer.

Notice: Read the mandatory FDA warning label found on every tanning machine for important information on potential eye injury, skin cancer, skin aging and photosensitive reaction and proper use. Compliant protective eyewear must be worn when using any indoor tanning system or device.

© 2014 JK Products & Services, Inc. reserves the right to change product designs, features, specifications, etc. without notice.

**SUN ERGOLINE, A DIVISION OF JK PRODUCTS & SERVICES, INC.**

1 Walter Kratz Drive · Jonesboro, AR 72401

☎ 870.935.1130 @ ergoline@sunergoline.com www www.sunangel-ergoline.us

fb www.facebook.com/ErgolineWorld @JKNorthAmerica

